

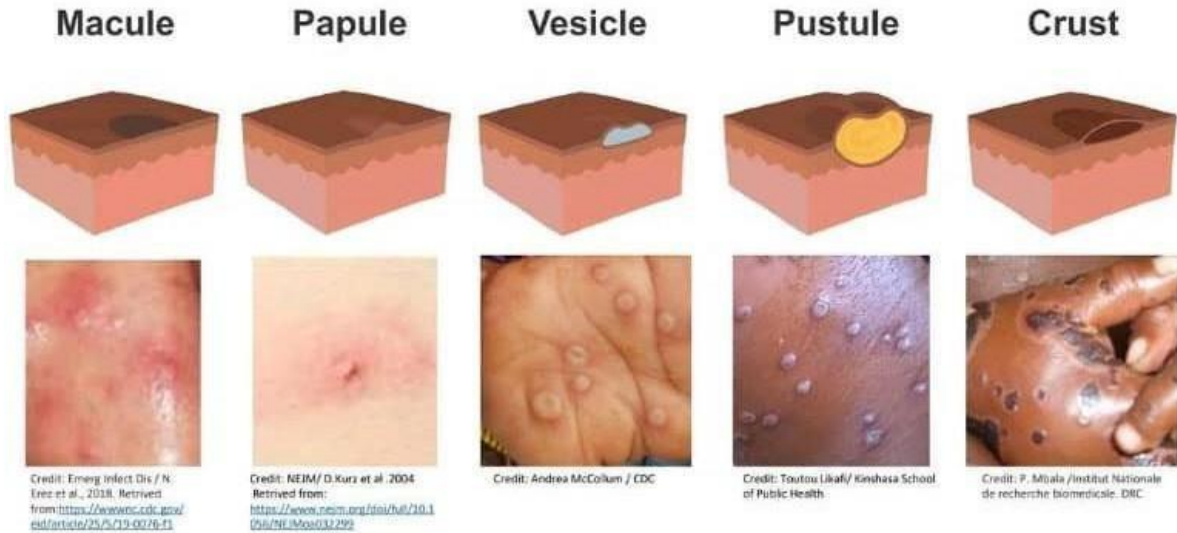
Differentiating mpox from other Diagnosis

	mpox	Chick en pox	HFMD	Measles
Incubation period	5-21 days	10-21 days	3-6 days	10-15 days
Prodromal period	1-4 days	0-2 days	2-3 days	2-4 days
Rash period	14-28 days	10-21 days	5-10 days	4-6 days
Rash appearance	Rash often in ONE stage of development Firm/rubbery and deep vesicles, well circumscribed and umbilicated	Rash often in multiple stages of development Superficial vesicles surrounded by irregular erythema (dew drop on rose petal)	Rash often in multiple stages of development Small vesicles (2-8mm), elongated on erythematous base	Rash often in multiple stages of development Maculopapular rash (non-vesicular)
Rash distribution	Centrifugal: Denser on face and extremities, often present on genitals	Centripetal: Denser on trunk	Hands, soles, buttocks and genitals	Face, neck, trunk and extremities
Palmoplantar involvement	Yes	Rare	Yes	Rare
Rash progression	Slow	Rapid	Rapid	Rapid
Lymphadenopathy	Yes	No	No	No
Classic feature	Lymph node swelling	Itchy rash	Oral ulcers	Koplik spots

Reference: Ng YY, Azidah AK. Monkeypox: A review of data essential in primary care. *Malays Fam Physician*. 2023;18:9. <https://doi.org/10.51866/rv.213>

mpox

mpox rash progresses from macule-papule-vesicle-pustule-crust but all rash are often in ONE stage of development.



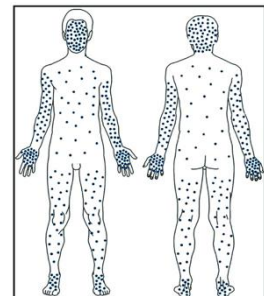
Examples of mpox rash:



mpox rash in vesicular stage.



A common finding in mpox:
Umbilicated papule or pustule.



Centrifugal distribution:
Denser on face and
extremities



Umbilicated papules and pustules over anogenital region.

Chicken pox



Rash in multiple stages of development. Papules, vesicles, pustules and crust are often present together.

'Dew drop on a rose petal'

Centripetal distribution:
Denser on trunk

Hand Foot and Mouth Disease



Elongated vesicles surrounded by an erythematous halo. Long axis of the lesion is oriented along the skin lines.



Symmetrical involvement of hands, soles, buttocks, genitalia, in and around mouth.

Measles



Maculopapular rash. Starts from face, spreads downward to the neck, trunk, arms, legs and feet.



Koplik spots, present during the prodromal stage of measles.